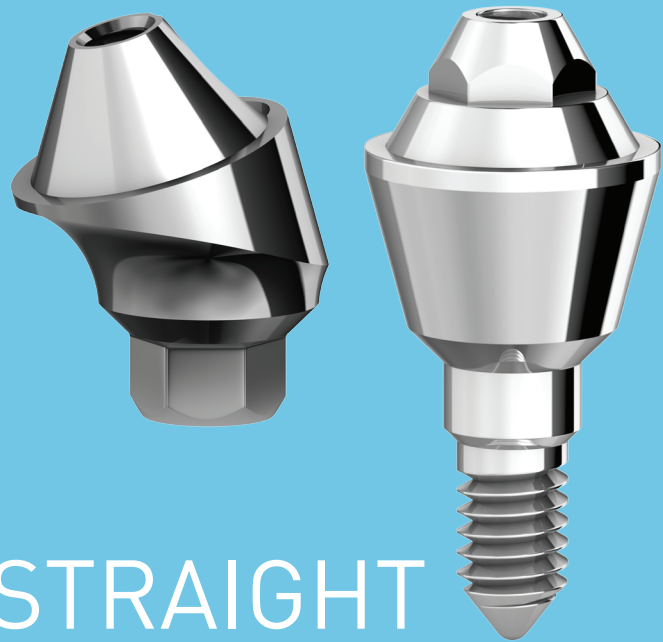




Superior Implant Technology



P64

ANGULAR/STRAIGHT
ADAPTOR SINGLE UNIT

P64

ANGULAR/STRAIGHT ADAPTOR SINGLE UNIT



Main advantages:

- Enables restoration on non-parallel implants by correcting extreme angles of implants
- Path of insertion is especially wide
- Complete internal screwing thread to the implant, giving additional strength to the abutment
- Available as angular adaptor in angles of 17°, 30°, 42° and as straight adaptor in heights of 1-5mm
- Platform switching by design, allowing perfect environment for soft-tissue growth and helps to prevent bone resorption



Corresponding parts:

