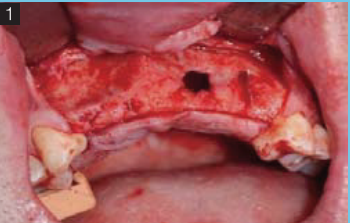
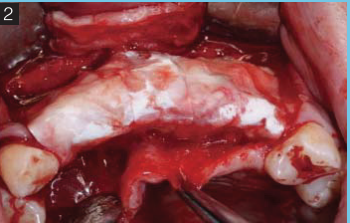


CLINICAL CASES

Fenestration Defect Repair



Buccal bone fenestration



Complete covering of the augmentation area with BioSeal-C

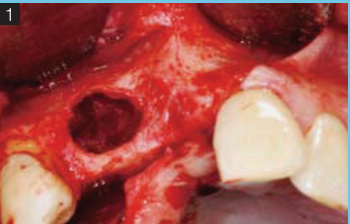


Satisfactory soft tissue healing



Perfect bony healing after four months

Horizontal Ridge Augmentation



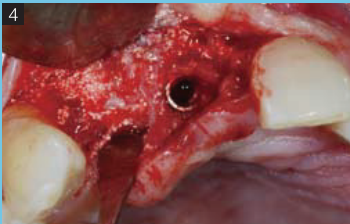
Horizontal bone defect



Complete covering of the augmentation area with BioSeal-C

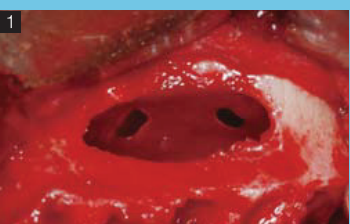


Satisfactory soft tissue formation with volume maintenance



Excellent new bone formation in secondary surgery

Sinus Perforation Repair



Perforation in lateral site



Place BioSeal-C into the sinus cavity



Covering BioSeal-C in the augmentation site

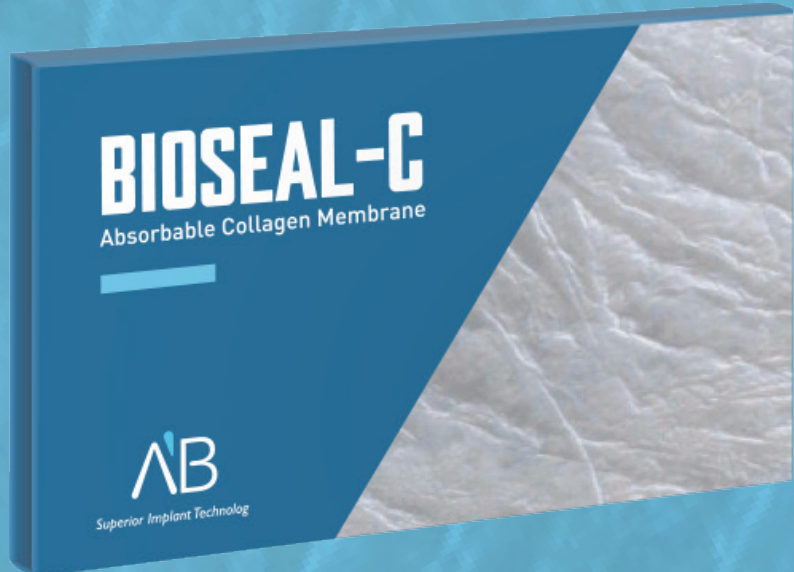


Perfect soft tissue condition with stable volume maintenance after six months



BIOSEAL-C

Absorbable Collagen Membrane



Tel: +972-8-8531388
Fax: +972-8-8522562
www.ab-dent.com

DMS 24323
Rev. 04/20

BioSeal-C Absorbable Collagen Membrane

For Successful Guided Bone Regeneration (GBR) and Guided Tissue Regeneration (GTR).

ADVANTAGES

- **Excellent tensile strength**
- **Excellent tear resistance**
- **Fast hydration**
- **Adapts to various defects**
Easy to shape and adapt to the osseous defects
- **Prolonged barrier function**
Biodegradable period - more than 3 months
- **Assists fast blood supply to the defect**
Through high porosity and special surface area, for optimal regeneration of bone and soft tissue
- **Lower incidence of soft tissue dehiscence**
Due to natural collagen structure
- **High suture pullout strength**

CLINICAL INDICATIONS

- GTR procedures
GBR procedures such as:
- Extraction socket grafting
 - Site preparation for implant
 - Preservation of the alveolar ridge
 - Fenestration defect
 - Sinus floor augmentation over the lateral window and Schneiderian membrane repairs

AVAILABLE SIZES

CM-1.5x2 – 15mm X 20mm
CM-2x3 – 20mm X 30mm
CM-3x4 – 30mm X 40mm

BETTER STABILITY

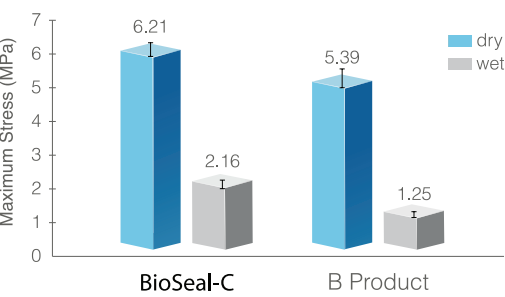
Bio-Seal-C has presents slow resorption period, which provides a prolonged barrier function of more than 3 months.

Product	Biodegradable period
BioSeal-C	More than 3 months
B product	Within 2 months

BETTER TENSILE STRENGTH

Bio-Seal-C has excellent tensile strength and excellent adaptation to surface contour, due to fast hydration and excellent flexibility.

Tensile Strength Test



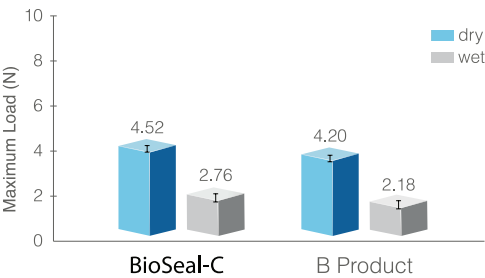
OPTIMAL TISSUE INTEGRATION

BioSeal-C has high porosity that allows excellent blood supply, to ensure optimal regeneration of bone and soft tissue.

Product	Porosity
BioSeal-C	87.5% ± 1.9%
B product	65.7% ± 2.8%

HIGH SUTURE PULLOUT STRENGTH

BioSeal-C has a high suture pullout strength, leading to low risk of detachment.



RELIABLE BARRIER FUNCTION

BioSeal-C ensures a significantly lower incidence of soft tissue dehiscence, due to natural collagen structure.

