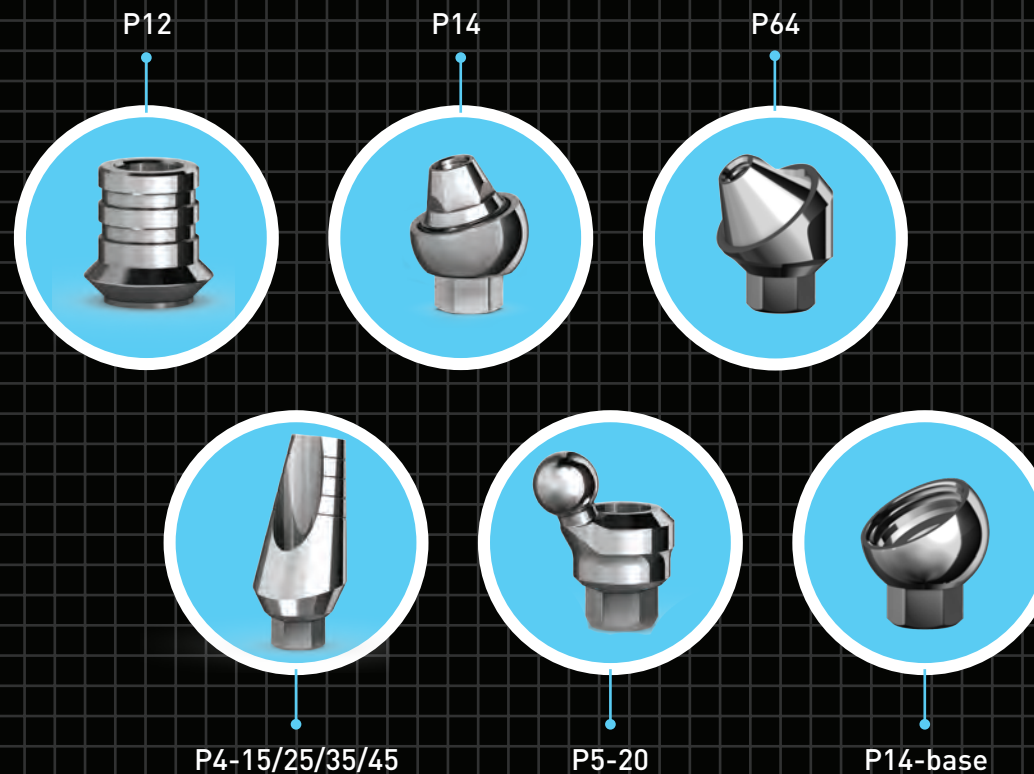
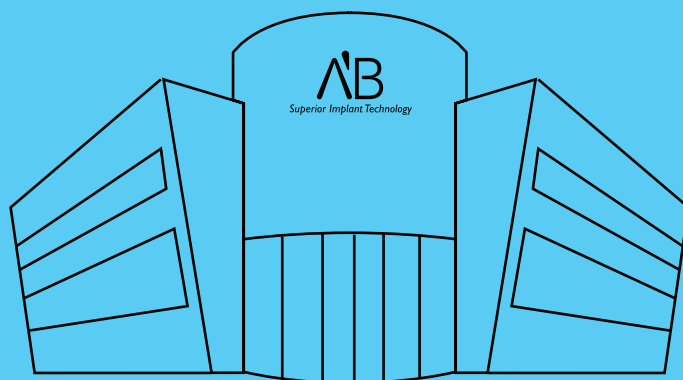


# SOLUTIONS FOR RESTORATION ON NON-PARALLEL IMPLANTS



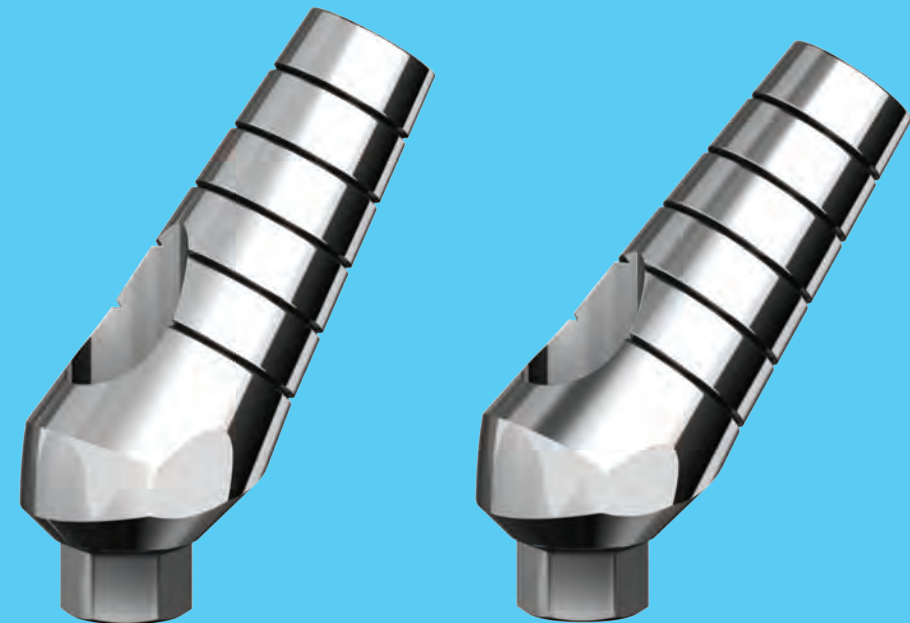
*Superior Implant Technology*

**AB DENTAL OFFERS YOU COMPREHENSIVE  
SOLUTIONS FOR RESTORATION ON NON-PARALLEL  
(TILTED) IMPLANTS, FOR ALL KINDS OF METHODS:  
CEMENT-RETAINED, SCREW-RETAINED  
AND OVERDENTURE.**



# CEMENT RETAINED RESTORATION

## ANGULAR ABUTMENTS FOR CEMENTED RESTORATION IMPLANTS AT EXTREME ANGLES



P4-3.75,35

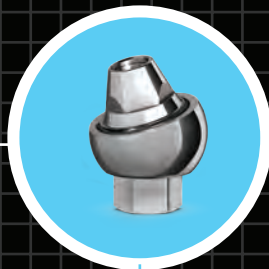
P4-3.75,45

Developed in collaboration with Dr. Gil Yehuda

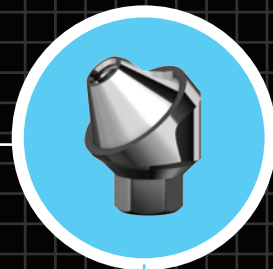
# SCREW RETAINED RESTORATION



P12



P14

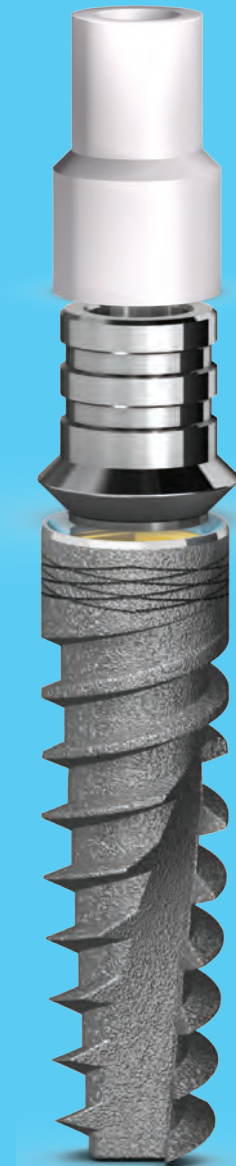


P64

ISSUED PATENT!

## P12 FLAT CONNECTION ABUTMENT

- Issued Patent by AB Dental
- Provides a comprehensive solution for temporary and permanent restoration while retaining maximum precision
- Used for screw retained restoration and enables restoration on non-parallel implants by cancelling the hex and thereby cancelling the obstruction of the insertion path
- Platform switching by design, allowing perfect environment for soft-tissue growth and helps to prevent bone resorption



P12C



D2-P12



D2N-P12

ISSUED PATENT!

## P14 ANGULAR ADAPTOR MULTI-UNIT ABUTMENT



- Issued Patent by AB Dental
- The adaptor (base & cone) enables restoration on non-parallel implants by correcting extreme angles of the implant
- The angle of the implant is corrected by using an angular base. The cone assembled on the base completes the assembly and provide a connection to the multi-unit abutment using a sleeve (temporary sleeve and permanent plastic sleeve for casting or CAD/CAM adhesive sleeve)
- The emergence profile of the abutment is designed to provide the perfect environment of soft-tissue growth to helps prevent bone resorption
- A perfect solution for "All on four" restorations



P14-3.75,30

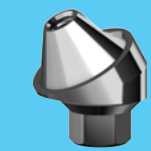


P14-3,30

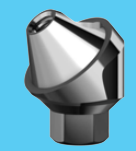


## P64 ANGULAR ADAPTOR SINGLE UNIT MULTI-UNIT ABUTMENT

- Enables restoration on non-parallel implants by correcting extreme angles of implants
- Platform switching by design, allowing perfect environment for soft-tissue growth and helps to prevent bone resorption
- Path of insertion is especially wide
- Available in angles of 17°, 30°, 42°
- The conical screw thread is deep and wide, giving additional strength to the abutment



P64-3.75,30



P64-3.75,42

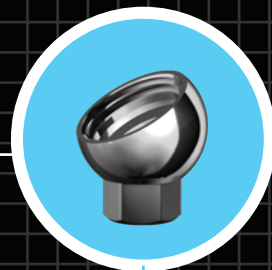


P64-3,30

# OVERDENTURE



P5-20



P14-base

ISSUED PATENT!

## P5-20

### ANGULAR BALL ATTACHMENT 20°

- Issued Patent by AB Dental
- Multi-optional angular ball attachment, made from a single piece, designed to connect a denture on tilted implants
- Enables adjustment of the angle at which the implant is positioned
- Provides multiple solutions for difficulties in affixing and removing over dentures, side pressures from other teeth/implants and prevents wear of ball attachment
- Excellent solution for non-parallel implants, even at extreme angles, for accurate joints on over denture implants



P5b Silicon Caps



## P14 BASE BASE FOR ANGULAR ADAPTOR

- Angular adaptors bases with a combination of ball attachments and AB LOC attachments
- Available in angles of 17° and 30°
- For use with:  
P5-P14 - Ball for Angular Adaptor  
P25-P14 - AB LOC for Angular Adaptor

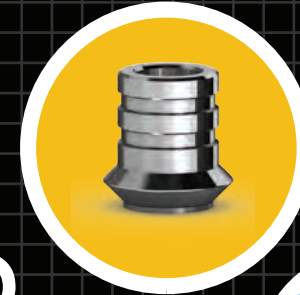


P5-P14

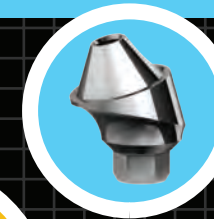
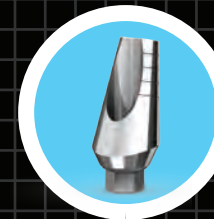


P25-P14

AB



Learning to smile never ends





*Superior Implant Technology*

Tel. +972-8-8531388

Fax. +972-8-8522562

Web. [www.ab-dent.com](http://www.ab-dent.com)